

RALLY COLORADO

JULY 19-20 RANGELY, COLORADO



Presented by:



ROUND 4 OF THE ARA WESTERN CHAMPIONSHIP



Rally Colorado and the whole Rally Community would like to thank all the residents, businesses and officials of Rio Blanco County and especially the town of Rangely, Colorado.

Many competitors, volunteers, officials and spectators call Rally Colorado the best rally in the USA. This can only be done with all the help from everyone involved, especially the **BLM|White River Field Office, Rio Blanco County Roads and Bridges, The Town Of Rangely, Utah Gas Company, BLM Vernal Field Office, Rangely Parks and Recreation, Elk Park, The Rangely Automotive Museum, The Blue Mountain Inn, North Western Colorado Community College, Rangely Chamber of Commerce, Rangely City Council** and countless other organizations and individuals.

Questions or concerns?

You can contact the organizer, Rupert Berrington, at 303.349.7861



AMERICAN RALLY
ASSOCIATION®

PRESENTED BY



ARA Partners /



SUBARU



FLATIRONS
SUBARU



5995 Arapahoe Ave
BOULDER, CO



2025 RALLY COLORADO

SPECTATOR SCHEDULE

FRIDAY

6:00PM-7:00PM: Meet the drivers and see the cars up close at Parc Expose. Immediately following parc expose is the Main Street parade and fly over

SATURDAY

9:00AM: Start from Elks Park in Rangely

11:17AM-12:00PM: Spectator point on SS3 - Under the Dragon

12:50PM-2:15PM: Service at Elks Park in Rangely

4:15PM-5:00pm: Spectator Point on SS6 - Under the Dragon

SUNDAY

10:00AM: Start from Elks Park in Rangely

10:15AM-11:00AM: Spectator point on SS7 - Valley of the Gods

12:25PM-2:00PM: Service at Elks Park in Rangely

1:50PM-2:30PM: Spectator point on SS10 - Valley of the Gods

~5:00PM: Podiums and end of event celebration



SATURDAY STAGES

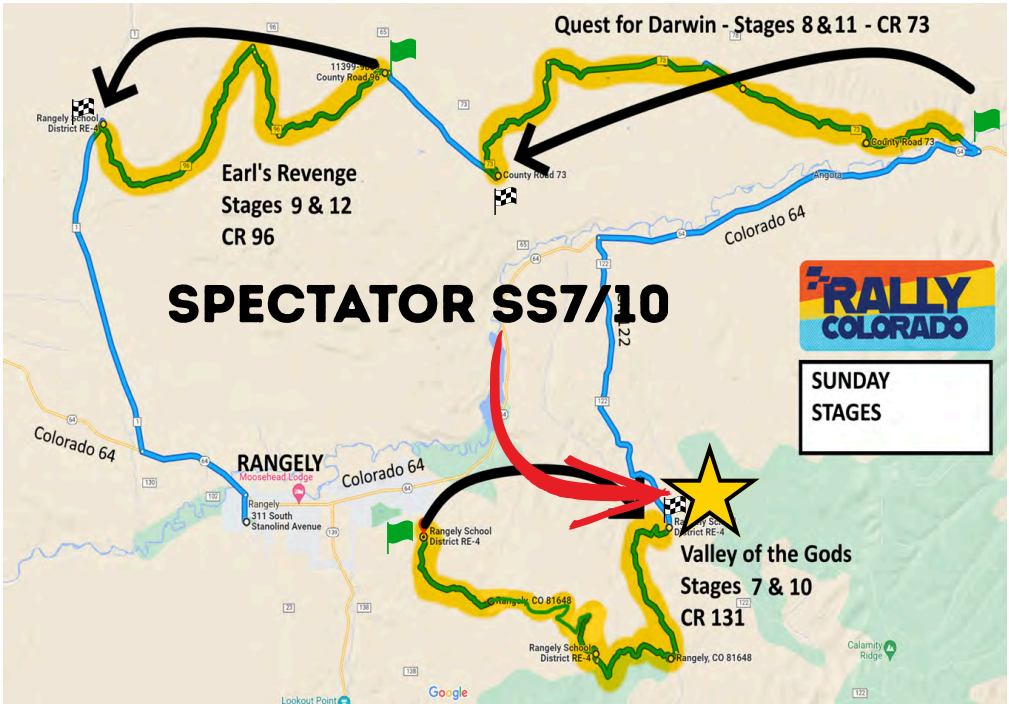
SPECTATOR SS3/6



Quest for Darwin - Stages 8 & 11 - CR 73

Earl's Revenge
Stages 9 & 12
CR 96

SPECTATOR SS7/10



SUNDAY STAGES

Valley of the Gods
Stages 7 & 10
CR 131

COMPETITION SCHEDULE

START Leg 1

SATURDAY JULY 19TH, 2025

TC	LOCATION	SS DIST	TRANSIT DIST	TOTAL DIST	LATENESS TIME	TRANSIT TIME	FIRST CAR DUE
0	MTC OUT (Rangely)						9:00
	distance to next refuel	(16.40)	(37.43)	(53.83)			
1			6.01	6.01		0:14	9:14
SS 1	Cathedral - CR100 West	4.23			0:08		9:17
2			27.89	32.12		1:02	10:27
SS 2	Dragon Trail - CR116/113 NW	12.17			0:18		10:30
			3.53	15.70			
RZ	Remote Refuel - Junction of CR114 and CR23						
1	distance to next refuel	(9.94)	(47.73)	(57.67)			
3			3.36	3.36		0:26	11:14
SS 3	Under the Dragon - CR109	9.94			0:16		11:17
3A	SERVICE IN		44.37	54.31		1:21	12:54
	SERVICE A - RANGELY	(26.34)	(85.16)	(111.50)		0:45	
3B	SERVICE OUT / REGROUP IN						13:39
	REGROUP - RANGELY					0:15	
3C	REGROUP OUT						13:54
RZ	Refuel - Rangely						
2	distance to next refuel	(16.40)	(37.43)	(53.83)			
			6.01	6.01		0:19	14:13
SS 4	Cathedral - CR100 West	4.23			0:08		14:16
2			27.89	32.12		1:02	15:26
SS 5	Dragon Trail - CR116/113 NW	12.17			0:18		15:29
			3.53	15.70			
RZ	Remote Refuel - Junction of CR114 and CR23						
3	distance to next refuel	(9.94)	(47.73)	(57.67)			
3			3.36	3.36		0:26	16:13
SS 6	Under the Dragon - CR109	9.94			0:16		16:16
6A	MTC IN (Rangely)		44.37	54.31		1:21	17:53
Leg 1 Totals		52.68	170.32	223.00			

Section 1

Section 2

START Leg 2

SUNDAY JULY 20TH, 2025

TC	LOCATION	SS DIST	TRANSIT DIST	TOTAL DIST	LATENESS TIME	TRANSIT TIME	FIRST CAR DUE
6B	MTC OUT (Rangely)						10:00
	distance to next refuel	(34.43)	(30.84)	(65.27)			
7			5.14	5.14		0:16	10:16
SS 7	Valley of the Gods - CR131 E	13.14			0:21		10:19
8			12.90	26.04		0:31	11:11
SS 8	Quest for Darwin - CR73 W	10.97			0:15		11:14
9			3.14	14.11		0:15	11:44
SS 9	Earl's Revenge - CR96 W	10.32			0:18		11:47
9A	SERVICE IN		9.66	19.98		0:21	12:26
	SERVICE B - RANGELY	(34.43)	(30.84)	(65.27)		0:45	
9B	SERVICE OUT / REGROUPING IN						13:11
	REGROUP - RANGELY					0:15	
9C	REGROUPING OUT						13:26
RZ	Refuel - Rangely						
4	distance to next refuel	(34.43)	(30.84)	(65.27)			
10			5.14	5.14		0:21	13:47
SS 10	Valley of the Gods - CR131 E	13.14			0:21		13:50
11			12.90	26.04		0:31	14:42
SS 11	Quest for Darwin - CR73 W	10.97			0:15		14:45
12			3.14	14.11		0:15	15:15
SS 12	Earl's Revenge - CR96 W	10.32			0:18		15:18
12A	MTC IN (Rangely)		9.66	19.98		0:21	15:57
Leg 2 Totals		68.86	61.68	130.54			

Section 3

Section 4

MERCH AVAILABLE



**GRAB YOUR 2025
COLLECTIBLE SHIRT
AT THE EVENT!!**





ADVENTURE AWAITS.

Whether it's mountain roads or morning commutes,
Flatirons Subaru has a vehicle that fits your drive.

Stop by today or visit us online.

5995 Arapahoe Ave, Boulder, CO 80303

flatironssubaru.com | 303.443.0114



FOLLOW ALONG

**LINK TO LIVE
TRACKING
AND RESULTS**



**RALLYSAFE
TRACKING
APP AVAILABLE**



RALLYCOGROUP



MOTORSPORT CAN BE DANGEROUS!!

DO NOT under any circumstances drive onto, walk onto, or attempt to cross a special stage WHEN IT IS LIVE. There will be competition cars travelling at extremely high speeds. Competition cars and their occupants have a wide range of mandatory safety devices & equipment to protect them - YOU DO NOT.

Green Light Sweep indicates that the stage is officially completed – please do not walk or drive onto the course until this vehicle has passed AND you have received clearance from a Marshal or Rally Official to do so.

PARKING: Many delays experienced in running a rally are due to spectator traffic jams and bad parking. Please park off the road OR ON ONLY ONE SIDE; Do not block roads by parking badly; Do not park in or obstruct any private driveways or roads; Do not park at the start or finish of THE stages. Please remember other road users and the general public.

SPECTATORS PLEASE DRIVE CAREFULLY - DRIVE SLOWLY and always heed the advice and warnings of our Rally Officials, Marshals, OR LOCAL POLICE

DO NOT:

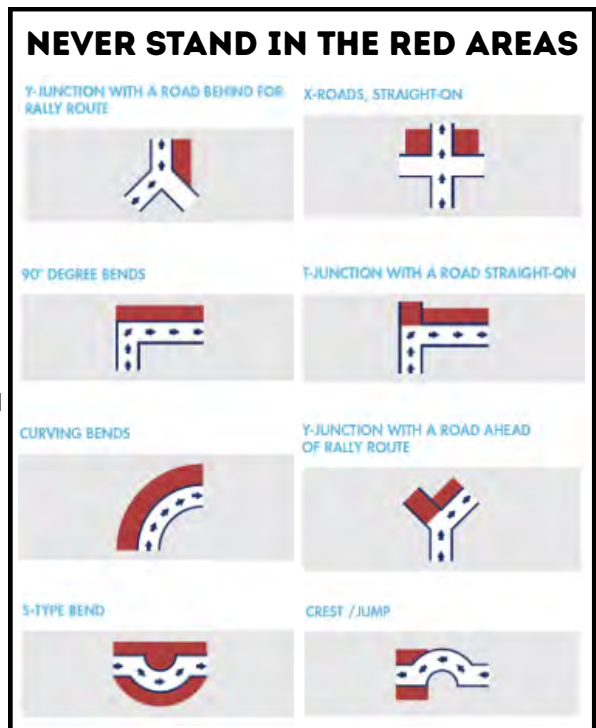
- stand on the road
- stand below the level of the road
- stand in front of arrows or signs
- stand or sit on walls or fences
- sit close to the edge of the track
- remove stage signs or arrows

ALWAYS:

- expect the unexpected
- listen for approaching cars
- remain alert
- try to keep behind something solid
- keep children under supervision
- do as the marshals ask

ROAD CLOSED - DO NOT CROSS THIS TAPE

ROAD CLOSED - DO NOT STAND HERE





BE AT THE HEART OF THE ACTION



Enjoy the rally from
the **safety of spectators'**
areas, that's where the
show takes place!

SO YOU'RE GOING TO A RALLY!

HERE'S WHAT YOU NEED TO KNOW

What to Bring:

- Sunscreen – You will be in the sun. A lot.
- Water – Bring more than you think you need. Then bring a little more.
- Snacks – There probably won't be food out there, so pack like you're going on a mini camping trip.
- Optional but smart: hat, sunglasses, lawn chair, a small umbrella for shade, ear protection (those engines scream!), a camera, and something to sit on (blanket or camp chair).

What to Expect:

- Follow the instructions and signs to get to the spectator spots. Make sure you only park on one side of the road!
- You're headed into the wild. Rally stages are often in remote areas, on dusty roads, and accessed by driving on a dirt road.
- It's gonna be hot. And dusty. And awesome.
- Rally cars will fly by about once every minute or so, depending on the field size.
- Each stage lasts around 45 minutes, so settle in and enjoy the show.
- Get there early – like an hour before the stage starts – to park and find your spot. Once the stage is live, you can't move around, so pick your spot and stay put.
- You'll probably have spotty cell service and no bathrooms nearby. Plan accordingly.
- Be cool: stay behind the tape, follow marshal (the people in vests!) instructions, and don't stand in sketchy spots (no one wants to be in a viral rally crash video for the wrong reason).

Pro Tips:

- If you see someone with a vest or radios, they probably know what's up–chat them up! Those are our volunteers and are happy to answer questions.
- Bring a small trash bag. Leave the area the way you found it.
- Cheer loud, wave flags, wear something fun. Drivers love enthusiastic fans!



**POWER, PERFORMANCE AND
GREAT SAVINGS FOR  FANS!**



\$0 DOWN **2.99%** A.P.R. FOR UP TO
36 MONTHS*

AND

SAVE UP TO **\$500** ON SELECT
EQUIPMENT*

Learn more at ARAKubotaDiscount.com

© Kubota Tractor Corporation, 2025. \$0 Down, 2.99% A.P.R. financing for up to 48 months. Customer instant rebates of \$300 are available on purchases of new Kubota RTV-XG850 series equipment from participating dealers' in-stock inventory. Promotional rate available to qualified purchasers through Kubota Credit Corporation, U.S.A.; subject to credit approval. Example: 48 monthly payments of \$22.13 per \$1,000 financed. \$300 rebate is not available with 0% APR or other promotional financing. Offers expire 9/30/25. Terms subject to change. For complete warranty, disclaimer, safety, incentive offer and product information, consult your Dealer or KubotaUSA.com. Your Kubota Limited warranty gives you specific legal rights. You may have other rights which vary from state to state. 2 years limited warranty or 1000 hours (whichever occurs first). Kubota Tractor Corporation does not authorize any person to create for KTC any obligation or liability other than that stated in the limited warranty.

FRIDAY 7/18

6:00PM-8:00PM: Meet the drivers and see the cars up close at Parc Exposé/Car Show.

Parc Exposé

Immediately following Parc Exposé is the parade down Main Street and fly over!

Rangely Auto Museum



**GREAT WAY FOR
THE WHOLE FAMILY
TO SEE THE CARS
AND DRIVERS
BEFORE THE
ACTION STARTS**



Rupert Berrington



**MEET TRAVIS PASTRANA
OF TEAM SUBARU!**



LOOKING FOR THE BEST VIEW?

VOLUNTEER!

**BE CLOSE TO THE ACTION AND
PART OF THE RALLY COMMUNITY!
ALL EXPERIENCE LEVELS WELCOME**

**GO TO RALLYCOLORADO.NET
FOR MORE INFO**

**EVENT SURVEY
HELP US
IMPROVE!**



SATURDAY 7/19

9:00AM: Competition starts from Elks Park in Rangely

11:00AM-12:00PM: Spectator point on SS3 - Under the Dragon

12:50PM-2:15PM: Service at Elks Park in Rangely

4:00PM-5:00pm: Spectator Point on SS6 - Under the Dragon

Service Area

40.083616, -108.810631

Parking available on the side streets.
Be mindful of the residents!!



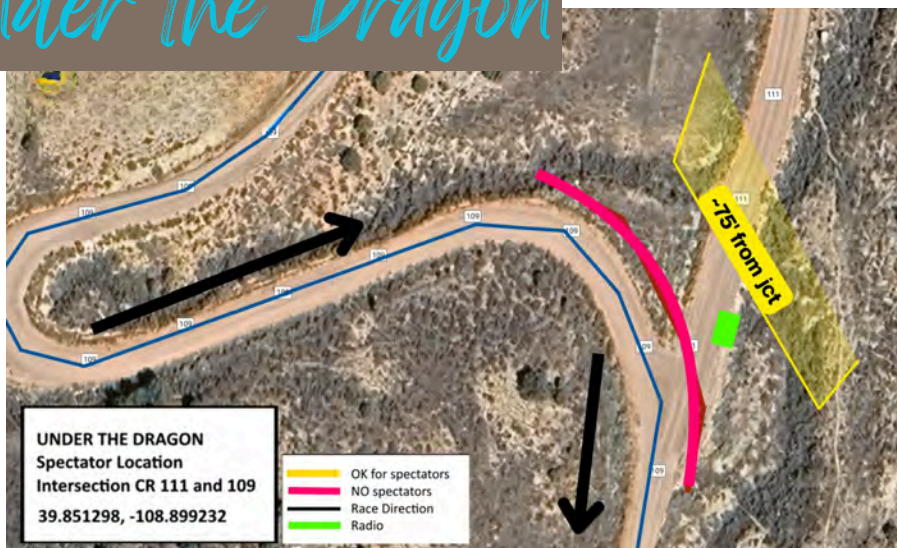
SS3/6 SPECTATOR



Be careful just following a GPS route. Depending on the software, it may try to take you on an active stage. Follow the signs as you get close.

Start on Main & S White
Turn South on S White - becomes HWY 23
Take CR 23 Dragon Road South 17.9 miles
Turn Left on CR 116 and travel East 4.9 miles.
DO NOT Stop at CR 109 entrance
[That is for Rally and Official cars only]
Turn right on CR 111 and drive 1.6 miles
! posted speed limit of 15 mph !
When you encounter parked cars make a U
turn and park the opposite direction
Leave 1 lane open for emergency vehicles

Under the Dragon



Park ONLY on the East side of the road and follow the marshal instructions and signage!!

SUNDAY 7/20

10:00AM: Start from Elks Park in Rangely

10:15AM-11:00AM: Spectator point on SS7 - Valley of the Gods

12:25PM-2:00PM: Service at Elks Park in Rangely

1:50PM-2:30PM: Spectator point on SS10 - Valley of the Gods

~5:00PM: Podiums and end of event celebration

Elks Park

**PROVEN
PERFORMANCE.
PLENTIFUL
POWER.**



**KUBOTA
LOWBOY GENERATORS**

Kubota LOWBOY generators utilize efficient, emission-certified diesel engines to provide a powerful, compact design and environmentally friendly performance for a variety of tough applications. Simple one-side maintenance makes it easy to service your generator as needed so it is always ready to power up.
Find the generator you need at
kubotaengine.com/generators



SS7/10 SPECTATOR



Directions from Rangely

Start at Main St. & South
White

Travel East for 11 miles on
Hwy 64

Turn right on CR 122

Go South 6.4 miles

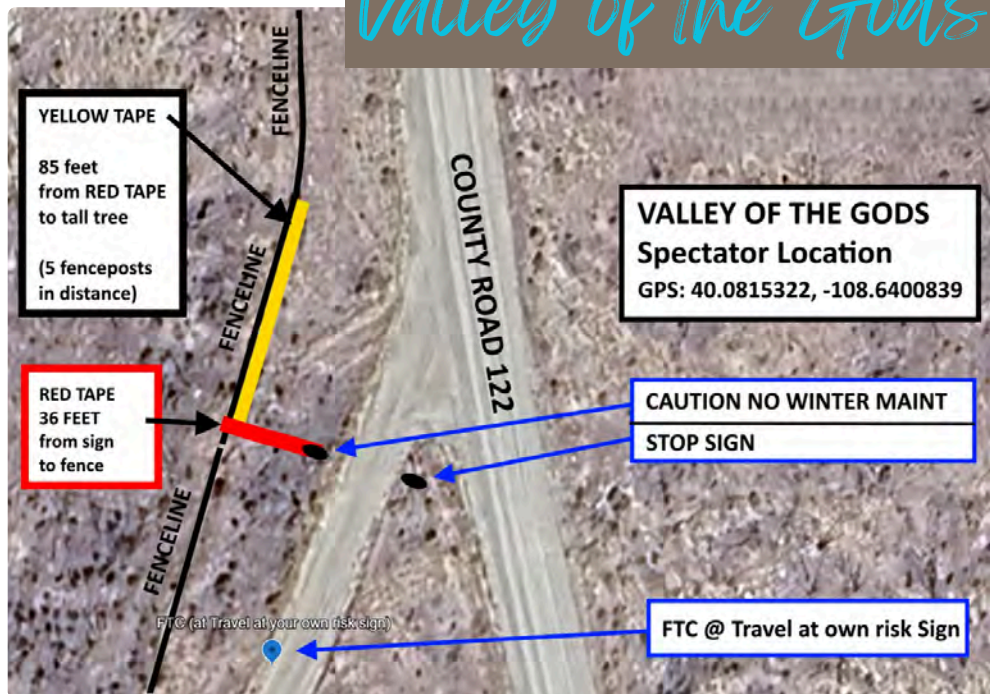
Park on the right shoulder
just past the intersection

to CR 131. Follow the
parking signs.



Directions to
the SS3/6
Spectator!

Valley of the Gods



AUTOGRAPHS



SPECTATOR GUIDE ONLINE



**EVENT SURVEY
HELP US
IMPROVE!**

