

SUPPLEMENTARY REGULATIONS



*2023 American Rally Association
Central Region Rally*

August 25 - 26, 2023

Sanctioned by:

Organized and Promoted by:
Rally Minnesota LLC



Welcome to the 2023 Ojibwe Forests Rally. This year marks the 40th anniversary of the Ojibwe Forests Rally. Over those four decades the rally has taken many forms. It has been a small TSD rally and is currently part of the American Rally Association Championship Series. We are proud of the history of this event.

Thank you for attending the rally this year, over the previous years and we hope in the future years. The Ojibwe Forests Rally committee and I as the Chairman are once again excited to open Northern Minnesota to the sounds of rally cars.

Erick Nelson
Chairman
Ojibwe Forests Rally

1. Introduction

- 1.1. The Ojibwe Forests Rally will take place on Friday, August 25 and Saturday, August 26 2023. The rally will consist of testing, recce, ceremonial start, and forest stages.

The final details of the route, as well as time controls, regrouping points, and route controls are described on the time schedule contained in the Route Book. The Route Book and the final itinerary will be issued digitally prior to the event and in print at the event.

The Ojibwe Forests Rally has been part of rally in the United States for over 40 years. The 2023 event is the seventh rally in the national American Rally Association championship.

- 1.2. The Ojibwe Forests Rally will be held under the General Competition Rules, Rally Technical Rules, and Rally Competition Rules of the American Rally Association (ARA). The 2023 American Rally Association Rules and Regulations can be found at <https://www.americanrallyassociation.org/rulesandbulletins>

Modifications, amendments and/or changes to these Supplementary Regulations will be announced only by numbered and dated Bulletins posted to the online notice board.

- 1.3. The Ojibwe Forest Rally stages are gravel with a sandy base. They are tighter forest roads lined by trees and can be easily rutted with rain or multiple passes of rally cars.

1.4. Overall SS Distance & Total Distances.

NATIONAL TOTALS OF THE RALLY				
	SS	TRANSIT	TOTAL	%
FRIDAY (Sections 1, 2)	69.98	152.48	222.46	31%
SATURDAY (Sections 3, 4, 5)	46.2	94.1	140.3	33%
Total -- 17 SS	116.2	246.6	362.8	32%

REGIONAL TOTALS OF THE RALLY				
	SS	TRANSIT	TOTAL	%
FRIDAY (Sections 1, 2)	69.98	152.48	222.46	31%
SATURDAY (Sections 3, 4)	38.3	67.5	105.8	36%
Total -- 16 SS	108.2	220.0	328.3	33%

2. Organization and Description

2.1. Organized by the Ojibwe Forests Rally Committee and Rally Minnesota, LLC

2.2. Committee

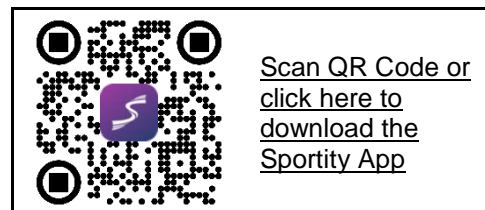
Role	Name	Contact Phone	Email
Chairman	Erick Nelson	651-260-9456	erick@rallyminnesota.com
Clerk of the Course	Jonathan Atkins	701-367-9867	clerkofcourse@rallyminnesota.com
Asst. Clerk of the Course	JB Niday	612-387-9001	jb@rallyminnesota.com
Chief of EMS	Nate Koppenhaver	701-541-7348	nkoppenhaver@rrrdc.com
Chief of Controls	Eric Linner	612-382-5641	controls@rallyminnesota.com
	Tyler Linner	651-472-1541	controls@rallyminnesota.com
Chief of Scrutineering	Greg Lahlum	701-793-6919	greg.lahlum@gmail.com
Registrar	Nicky Schmidt	612-801-3332	registrar@rallyminnesota.com
Chief of Communications	Tom Nelson	970-222-2125	tnelson@frii.com
Chief of Bannering	Alison Crouch	253-228-8109	bmymariea@yahoo.com
Chief of Service	David Zemaitis	239-851-1900	dazemaitis@gmail.com

2.3. ARA Officials

Role	Name	Contact Phone	Email
ARA Steward	Alan Perry	206-499-5501	alanp@snowmoose.com
Event Steward	Mark Everett	914-414-1110	mark@goeverett.com
Competition Director	Preston Osborn	720-646-4331	preston@ara-rally.com
Technical Director	Doug Nagy	949-637-7856	doug@ara-rally.com
Media Officer	Jeremy Meyer	218-341-6892	jeremy@usacnation.com

2.4. Notice Board

The Official Notice Board is accessed with the Sportity App which available for both Apple and Android devices. The password for this event is OFR2023. All official documents, Bulletins, start orders, results, inquiries and responses will use the Sportity App.



3. Schedule

Time (Central)	Description	Location
Saturday, July 1, 2023		
0900	Supplemental Regulations Published	Sportity
Wednesday, July 5, 2023		
1200	Entry opens	Rallylicense.com
Monday, July 31, 2023		
2359	Normal Entry Ends	Rallylicense.com
Tuesday August 1, 2023		
0000	Late Entry Opens	Rallylicense.com
Sunday, August 20, 2023		
2359	Competitor Entry Closes	Rallylicense.com
Monday, August 21, 2023		
	Entry List & Provisional Start List	Sportity
1900	Novice Competitor Virtual Meeting	Online Teams Meeting
Wednesday, August 23, 2023		
0800-1600	Testing Stages	
1700-2100	Team Check-In	Soo Pass Ranch
Thursday, August 24, 2023		Sunrise 0627 - Sunset 2013
0600-1200	Team Check-In	Soo Pass Ranch
0700-1800	Recce	Forest Stages
0900-1700	Scrutineering	Soo Pass Ranch
1900-2200	Rally Kick-Off Party	Soo Pass Ranch
1930-2100	Parc expose	Soo Pass Ranch
2015-2100	Ceremonial Start	Soo Pass Ranch
1900	Steward Meeting	Soo Pass Ranch
1930	Seeded Draw	TBD
1930	Start List Posted	Sportity
Friday, August 25, 2023		Sunrise 0629 - Sunset 2012
0800	Service Opens	Pioneer Farm Service Area
0900-1100	Registration/Check-In (By Appt. Only)	Pioneer Farm Service Area
1300	First Car Out	Pioneer Farm Service Area
1652	Service Opens	Pioneer Farm Service Area
2114	End of Day 1	Pioneer Farm Service Area
Saturday, August 26, 2023		Sunrise 0630 - Sunset 2010
730	Service Opens	Pioneer Farm Service Area
By Appt. Ony	Tech Inspection	Pioneer Farm Service Area
1000	First Car Out	Pioneer Farm Service Area
1235	Service Opens	Pioneer Farm Service Area
1700	Regional Podium	Pioneer Farm Service Area
1830	National Podium	Pioneer Farm Service Area

4. Entries

- 4.1. Entry and payment must be paid online at <http://rallylicense.com>. ARA will send an email blast to ARA license holders announcing the opening of online entries. Contact ara@ara-rally.com with issues with the online entry process.

Rally participants must have an ARA license (competitors, service, and volunteer) available on the ARA website.

- 4.2. The Ojibwe Forests Rally is limited to 75 cars. If more than 75 entries are received a waitlist will be used with priority based on time and date of entry and payment received. Initially, 70 entries will be accepted with the last five spots held until August 20, 2023, for the top five national teams from the 2023 ARA Championship. Wait listed entries not accepted will receive a full refund.

The first 10 paid National and Regional teams competing in a Subaru vehicle are eligible for discounts.

Discount codes are:

23OFRNat

23OFRReg

4.3. Entry Fee Schedule

2023 Ojibwe Forests Rally	Regular Entry	Late Entry
	July 5 - July 31 @ 2359	August 1 – 20 @ 2359
National	\$ 1,250	\$ 1,400
Regional	\$ 900	\$ 1,000
Extra Service Space	\$ 200	

- 4.4. Entry fee includes recce participation, one service route book, single service spot and competitor route book. All competitors will receive printed and bound copies of all information necessary to complete the rally or follow the service route successfully. Printed materials can be picked up at event check in. All race documents will also be provided as a digital download once finalized.
- 4.5. Competitors needing to withdraw from the rally must complete the Entry Update/Withdrawal Form available on the Sportity App in the Registrar folder.
- 4.6. An entry may be withdrawn in accordance with GCR 4.9.
- Prior to 23:59 on 8/6/2023 – full refund
 - After 23:59 on 8/6/2023 and until 23:59 on 8/20/2023 – \$100 held by the event and remaining balance refunded
 - After 23:59 on 8/20/2023 – no refund.
 - If the event is cancelled a full refund will be issued.

5. Insurance

- 5.1. Third party liability insurance covering bodily injury and property damage, effective during the competition, will be provided by a policy secured by USAC and displayed on the Official Notice Board.
- 5.2. Competitors, service crew members and all event participants including officials, marshals, staff, stewards and all other volunteers who have obtained an ARA license, signed an ARA waiver and have been issued and are in possession of an event wristband confirming the signature of the waiver will be covered by a secondary USAC participant accident insurance policy which covers excess medical expenses to their primary medical insurance provider.

6. Advertising and Identification

- 6.1. The Ojibwe Forests Rally may use the event sponsor advertising space allowed by ARA rules. If this decal is provided during check-in it must be installed prior to scrutineering. Competitors choosing not to

install the event sponsor decal must pay the event promoter (Rally Minnesota LLC) the \$1,000 fee. The fee must be paid before the vehicle will pass scrutineering.
<http://ojibwe-forests-rally.square.site/>

7. Fuel

- 7.1. VP Fuel will be available for pre-purchase and delivered to the event. Deadline to order VP Fuel is August 11, 2023. Details are available at the QR Code or link.
- 7.2. Pick up will be at the scrutineering location at Soo Pass Ranch. The Ojibwe Forests Rally and Rally Minnesota LLC is not responsible for fuel not picked up by the end of the day Thursday, August 24, 2023.



8. Reconnaissance (Recce)

- 8.1. Drivers and co-drivers must check in at the scheduled registration/check-in location prior to participating in recce.

8.2. Recce Details

- 8.2.1. Recce will be open. Competitors may make as many passes as the time and recce speed limit allows. Recce is open from 7am until 6pm, Thursday, August 24, 2023.
- 8.2.2. Speed limit during recce is 30mph on stage roads. Otherwise use posted speed limit on transits. Speed limits will be enforced in accordance with ARA Bulletin 2023-5.
- 8.2.3. Recce roads are open to the public. Teams must drive responsibly and stay on the proper side of the road.
- 8.2.4. Street vehicles must be used during recce. No lettering, advertising or livery can be on the vehicles. No prepared rally cars are allowed. The Clerk of the Course will be the final determinant of any violations.
- 8.2.5. As the Ojibwe Forests Rally has done for last few years an advance digital packet will be sent to all registered teams prior to the event, on or around the second week in August.

9. Registration/Check-in

- 9.1. Teams attending the event must check in during the times available in the event schedule. If all documents have been provided to ARA and there are no administrative issues, the team packet can be picked up by a single team representative.
- 9.2. Check-in will be at the Soo Pass Ranch. Waivers must be completed online as part of the licensing process. *The pin at the google link to the right is on the building used for check in.*

Soo Pass Ranch
25526 County Highway 22
Detroit Lakes, MN 56501



- 9.3. All participants (competitors and crew) must have completed the licensing process online.



10. Scrutineering

- 10.1. Scrutineering will be held at the Soo Pass Ranch. Scrutineering will be in the large white shed located in the concert bowl. The pin at the link to the right is located on the building where scrutineering will take place.
- 10.2. Scrutineering times will be scheduled by the Chief of Scrutineering. The times will be communicated to the teams and posted on Sportity after registration closes.
- 10.3. Per ARA rules all decals and identification must be on the car prior to arriving at scrutineering. ARA door panels, windshield banners and number packages can be purchased online in advance.
- 10.4. Competition vehicles must be clean (washed) inside and out when presented for scrutineering. Vehicles not adequately clean will be refused inspection until they are clean.



11. Service

- 11.1. The 2023 Ojibwe Forests Rally will have one service location. No servicing at Soo Pass Ranch.
 - 11.1.1. Friday and Saturday Service
Pioneer Farms
16879 N Entrance Dr
Shevlin, MN 56676
 - 11.1.2. Service spaces will be assigned by the Chief of Service. For any special needs regarding service and placement contact the Chief of Service.
- 11.2. Service will open:

<u>Friday</u>	<u>Saturday</u>
0800	0730



- 11.3. The standard Service space will be 20 ft. X 60 ft., with entrance only via one 20 ft. side. If you need more room, you must register for additional space(s) of 20 ft. X 60 ft as needed. There will be a \$200 charge for each additional space needed. You must be able to place your vehicle(s), trailer(s) and service equipment all within the space(s) assigned to you. There will be no space available to park your trailer away from your service area.
- 11.4. No alcohol use will be permitted in the service area. This includes everyone in the Service area, no matter what their connection to the rally - all teams, crews, guests, and volunteers.
- 11.5. Vehicles not officially registered with a team as a service vehicle will be not allowed in the service area. All officially registered vehicles must display registration cards with prominent car number on their dash at all times. Vehicles without cards will be considered spectator vehicles and not permitted into the service area for any reason. Limited parking will be available outside the service area.
- 11.6. Tarps/spill cloths must be placed under cars for all servicing operations. Service areas not cleaned will be subject to \$150 fine.
- 11.7. No on-ground grills, or disposing of any charcoal, briquettes, etc., are permitted. Any non-gas grill ignition sources must be completely COLD or removed in a fire-proof container.
- 11.8. **Service crews must notify the Chief of Service when they leave the service area to retrieve a car.**
- 11.9. Purchasing fuel from commercial gas stations located along transit sections of the route is permitted. All work involved in adding such fluids must be performed by the driver and/or co-driver if outside of the service area. No added allowance is included in transit times for such fueling.
- 11.10. Follow the direction of the Rally volunteer staff when parking your service vehicle at all service locations. Teams will have an assigned location based on running order and space requirements.
- 11.11. Overnight camping Friday night to Saturday is permitted at Pioneer Farms for all teams.

12. Testing Stage

- 12.1. A testing stage will be provided on Wednesday, August 17 from 8AM – 4PM.
 - Testing will be available in two hour time blocks.
 - Each block will have a maximum of four teams at \$250 each.
- 12.2. Registration and payment can be made at the following link:
<http://ojibwe-forests-rally.square.site/>
- 12.3. Practice or testing on any public road in the Paul Bunyan, Two Inlets and White Earth State Forests is forbidden, without consent of the Clerk of the Course, 90 days prior and 30 days following the Ojibwe Forest Rally.

Teams found in violation will be barred from starting or excluded from finishing the Ojibwe Forests Rally. Their entry fee will not be refunded. The Clerk of the Course will be the sole arbiter of any potential violation.
- 12.4. Any practice or testing on a private road or facility within the areas listed above during the dates stated in section 12.3 must be conducted with the written permission of the property owner. The Clerk of the Course must be given at least 48 hours advance notice of any such arrangements, including a copy of the permission and contact information for the property owner.
- 12.5. Private testing sessions can be arranged by contacting the Ojibwe Forests Rally Chairman at:
erick@rallyminnesota.com

13. Features of the Rally

13.1. Parc Expose

- 13.1.1. Parc Expose will be held Thursday from 1930 to 2100 at Soo Pass Ranch and will include a ceremonial start.
- 13.1.2. RCR 4.10 will apply to the Parc Expose.

13.2. Start of the Rally

- 13.2.1. Each competition day will start from the service location at Pioneer Farms.
- 13.2.2. The official start order will be posted on Sportity.

13.3. Running of the Rally

- 13.3.1. The rally will be scored in accordance with ARA Bulletin 2023-4. Informational and provisional results will be posted on Sportity.
- 13.3.2. The running of Otterkill 3 (SS17) will be the Power Stage.
- 13.3.3. The power stage will be run at a 2 minute interval for all competitors.
- 13.3.4. There will be an optional refuel zone designated on the transit between SS1 and SS2 and again between SS5 and SS6. The optional refuel zone will be clearly identified in the route book and the area will be clearly identified with fuel zone begin and end signs. The service route book will include the route service crews must follow between the service area and the optional refuel zone.
- 13.3.5. For National early check in is allowed for control TC8A of Leg One, and TC18A of Leg Two.
- 13.3.6. For Regional early check in is allowed for control TC8A of Leg One, and TC17A of Leg Two.

13.4. Rejoining the event after retirement (ARA RCR 6.3)

- 13.4.1. 13.4.1. Competitors who have missed one or more controls and are Restarting After Retirement or wish to rejoin as a Non-Competitive Entry, are required to complete and submit an inquiry on Sportity before they restart. The Clerk of the Course and Chief Scrutineer will verify that the team meets the safety requirements and has any required tracking or monitoring equipment before issuing a timecard for the Rally Re-Entry.

13.5. Finish of the Rally

- 13.5.1. Final Checks and Impound will be at Pioneer Farms.
 - 13.5.2. Final Results will be posted on the Sportity Online Notice Board.
 - 13.5.3. The official finish will be at Pioneer Farms.
 - 13.5.4. Regional rallies award points to Overall, Limited 4WD, NA4WD, Open 2WD and Limited 2WD. The Ojibwe Forests Rally Officials will award trophies in all classes with more than two finishers.
 - 13.5.5. A volunteer banquet will be held on Saturday evening at Pioneer Farms. All teams are welcome to attend and mingle with our volunteers.
- 13.6. Soo Pass Ranch will be used for many activities Wednesday and Thursday of event week. Please follow signage, volunteers and directions.

14. Sanction Exemptions

- 14.1. None.

Appendix 1: National Schedule

START - (Sections 1, 2)

FRIDAY AUGUST 25, 2023

TC	LOCATION	SS DIST	TRANSIT DIST	TOTAL DIST	LATENESS TIME	TRANSIT TIME	FIRST CAR DUE
0	MTC OUT (Pioneer Farms)						13:00
	distance to next refuel	(10.68)	(32.76)	(43.44)			
1			26.45	26.45		00:39	13:39
SS 1	THORPE TOWER	10.68			00:17		13:42
	REFUEL IN (5 MIN FOR FUEL)		6.31	16.99		00:21	14:20
	distance to next refuel	(24.31)	(43.48)	(67.79)			
2			2.56	2.56		00:03	14:28
SS 2	REFUGE	5.65			00:08		14:31
3			4.06	9.71		00:14	14:53
SS 3	KABEKONA	11.08			00:18		14:56
4			6.12	17.20		00:24	15:38
SS 4	STEAMBOAT	7.58			00:13		15:41
4A	REGROUP IN		30.74	38.32		00:43	16:37
4B	REGROUP OUT - SERVICE IN					00:15	16:52
	SERVICE IN (Pioneer Farms)	(34.99)	(76.24)	(111.23)			
4C	SERVICE OUT					00:45	17:37
RZ	REFUEL						
1	distance to next refuel	(10.68)	(32.76)	(43.44)			
5			26.45	26.45		00:39	18:16
SS 5	THORPE TOWER 2	10.68			00:17		18:19
	REFUEL IN (5 MIN FOR FUEL)		6.31	16.99		00:21	18:57
	distance to next refuel	(24.31)	(43.48)	(67.79)			
6			2.56	2.56		00:03	19:05
SS 6	REFUGE 2	5.65			00:08		19:08
7			4.06	9.71		00:14	19:30
SS 7	KABEKONA 2	11.08			00:18		19:33
8			6.12	17.20		00:24	20:15
SS 8	STEAMBOAT 2	7.58			00:13		20:18
8A	MTC 2 IN (Pioneer Farms)		30.74	38.32		00:43	21:14

Section 1

Section 2

Friday Totals	69.98	152.48	222.46
----------------------	-------	--------	--------

TC	LOCATION	SS DIST	TRANSIT DIST	TOTAL DIST	LATENESS TIME	TRANSIT TIME	FIRST CAR DUE
8B	MTC 3 OUT (Pioneer Farms)						10:00
2	distance to next refuel	(19.13)	(33.77)	(52.90)			
9			15.26	15.26		00:26	10:26
SS 9	KANTEN TRAIL	4.33			00:09		10:29
10			3.29	7.62		00:12	10:50
SS 10	PERKINS ROAD	4.60			00:08		10:53
11			1.41	6.01		00:11	11:12
SS 11	WALDE TRAIL	2.27			00:05		11:15
12			2.70	4.97		00:14	11:34
SS 12	OTTERKILL	7.93			00:13		11:37
12A	REGROUP IN		11.11	19.04		00:22	12:12
12B	REGROUP OUT - SERVICE IN					00:15	12:27
	SERVICE IN (Pioneer Farms)	(19.13)	(33.77)	(52.90)			
12C	SERVICE OUT					00:30	12:57
RZ	REFUEL						
3	distance to next refuel	(19.13)	(33.77)	(52.90)			
13			15.26	15.26		00:26	13:23
SS 13	KANTEN TRAIL 2	4.33			00:09		13:26
14			3.29	7.62		00:12	13:47
SS 14	PERKINS ROAD 2	4.60			00:08		13:50
15			1.41	6.01		00:11	14:09
SS 15	WALDE TRAIL 2	2.27			00:05		14:12
16			2.70	4.97		00:14	14:31
SS 16	OTTERKILL 2	7.93			00:13		14:34
16A	REGROUP IN		11.11	19.04		00:22	15:09
16B	REGROUP OUT - SERVICE IN					00:15	15:24
	SERVICE IN (Pioneer Farms)	(19.13)	(33.77)	(52.90)			
16C	SERVICE OUT					00:30	15:54
RZ	REFUEL						
4	distance to next refuel	(7.93)	(26.57)	(34.50)			
17			15.46	15.46		00:26	16:20
SS 17	OTTERKILL 3	7.93			00:13		16:23
18A	MTC 4 IN (Pioneer Farms)		11.11	19.04		00:22	16:58

Section 3

Section 4

Section 5

Saturday Totals	46.19	94.11	140.30
------------------------	-------	-------	--------

Appendix 2: Regional Schedule

START - (Sections 1, 2)

FRIDAY AUGUST 25, 2023

TC	LOCATION	SS DIST	TRANSIT DIST	TOTAL DIST	LATENESS TIME	TRANSIT TIME	FIRST CAR DUE
0	MTC OUT (Pioneer Farms)						13:00
	distance to next refuel	(10.68)	(32.76)	(43.44)			
1			26.45	26.45		00:39	13:39
SS 1	THORPE TOWER	10.68			00:17		13:42
	REFUEL IN (5 MIN FOR FUEL)		6.31	16.99		00:21	14:20
	distance to next refuel	(24.31)	(43.48)	(67.79)			
2			2.56	2.56		00:03	14:28
SS 2	REFUGE	5.65			00:08		14:31
3			4.06	9.71		00:14	14:53
SS 3	KABEKONA	11.08			00:18		14:56
4			6.12	17.20		00:24	15:38
SS 4	STEAMBOAT	7.58			00:13		15:41
4A	REGROUP IN		30.74	38.32		00:43	16:37
4B	REGROUP OUT - SERVICE IN					00:15	16:52
	SERVICE IN (Pioneer Farms)	(34.99)	(76.24)	(111.23)			
4C	SERVICE OUT					00:45	17:37
RZ	REFUEL						
1	distance to next refuel	(10.68)	(32.76)	(43.44)			
5			26.45	26.45		00:39	18:16
SS 5	THORPE TOWER 2	10.68			00:17		18:19
	REFUEL IN (5 MIN FOR FUEL)		6.31	16.99		00:21	18:57
	distance to next refuel	(24.31)	(43.48)	(67.79)			
6			2.56	2.56		00:03	19:05
SS 6	REFUGE 2	5.65			00:08		19:08
7			4.06	9.71		00:14	19:30
SS 7	KABEKONA 2	11.08			00:18		19:33
8			6.12	17.20		00:24	20:15
SS 8	STEAMBOAT 2	7.58			00:13		20:18
8A	MTC 2 IN (Pioneer Farms)		30.74	38.32		00:43	21:14

Section 1

Section 2

Friday Totals	69.98	152.48	222.46
----------------------	-------	--------	--------

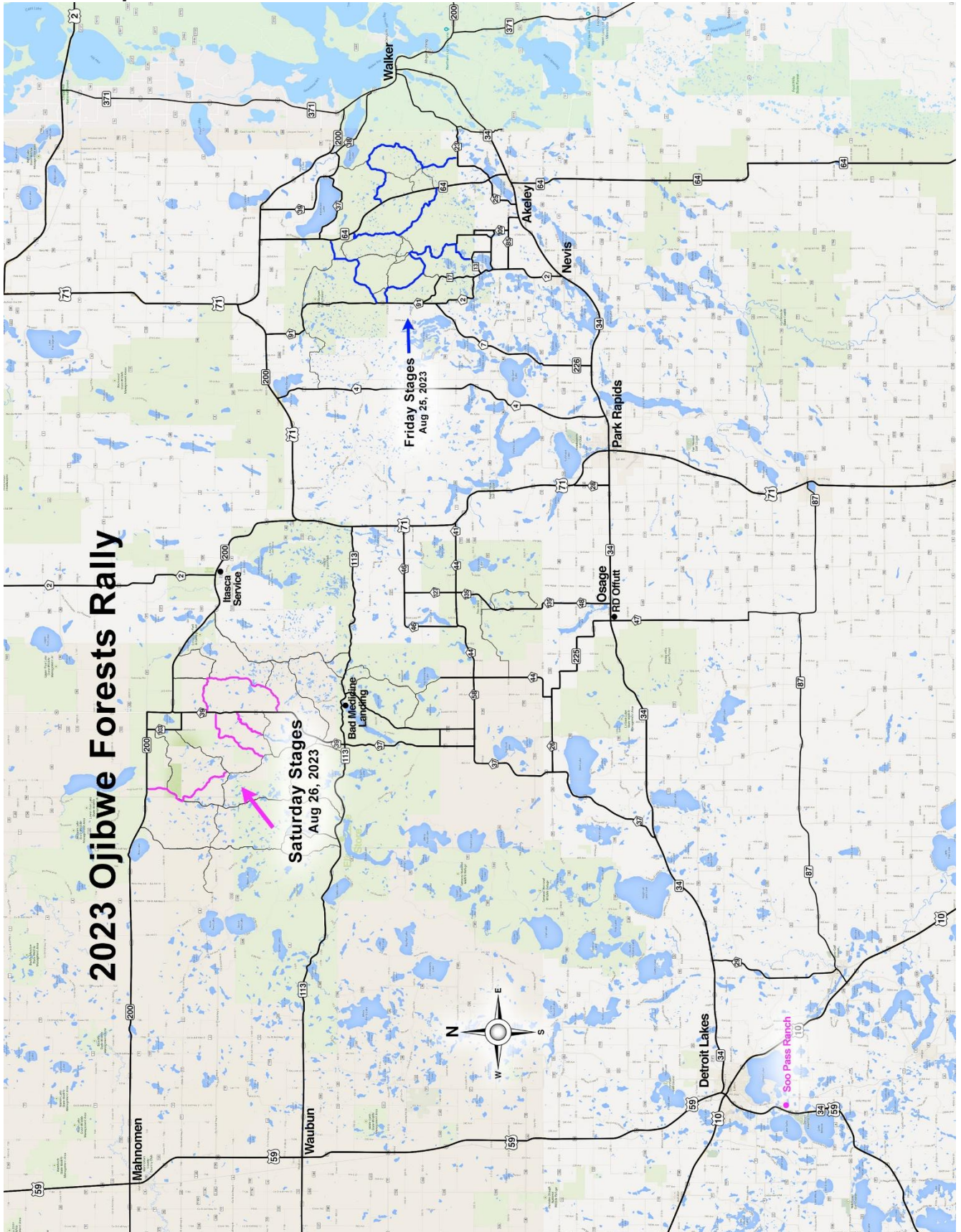
TC	LOCATION	SS DIST	TRANSIT DIST	TOTAL DIST	LATENESS TIME	TRANSIT TIME	FIRST CAR DUE
8B	MTC 3 OUT (Pioneer Farms)						10:00
2	distance to next refuel	(19.13)	(33.77)	(52.90)			
9			15.26	15.26		00:26	10:26
SS 9	KANTEN TRAIL	4.33			00:09		10:29
10			3.29	7.62		00:12	10:50
SS 10	PERKINS ROAD	4.60			00:08		10:53
11			1.41	6.01		00:11	11:12
SS 11	WALDE TRAIL	2.27			00:05		11:15
12			2.70	4.97		00:14	11:34
SS 12	OTTERKILL	7.93			00:13		11:37
12A	REGROUP IN		11.11	19.04		00:22	12:12
12B	REGROUP OUT - SERVICE IN					00:15	12:27
	SERVICE IN (Pioneer Farms)	(19.13)	(33.77)	(52.90)			
11C	SERVICE OUT					00:30	12:57
RZ	REFUEL						
3	distance to next refuel	(19.13)	(33.77)	(52.90)			
13			15.26	15.26		00:26	13:23
SS 13	KANTEN TRAIL 2	4.33			00:09		13:26
14			3.29	7.62		00:12	13:47
SS 14	PERKINS ROAD 2	4.60			00:08		13:50
15			1.41	6.01		00:11	14:09
SS 15	WALDE TRAIL 2	2.27			00:05		14:12
16			2.70	4.97		00:14	14:31
SS 16	OTTERKILL 2	7.93			00:13		14:34
16A	MTC 4 IN (Pioneer Farms)		11.11	19.04		00:22	15:09

Section 3

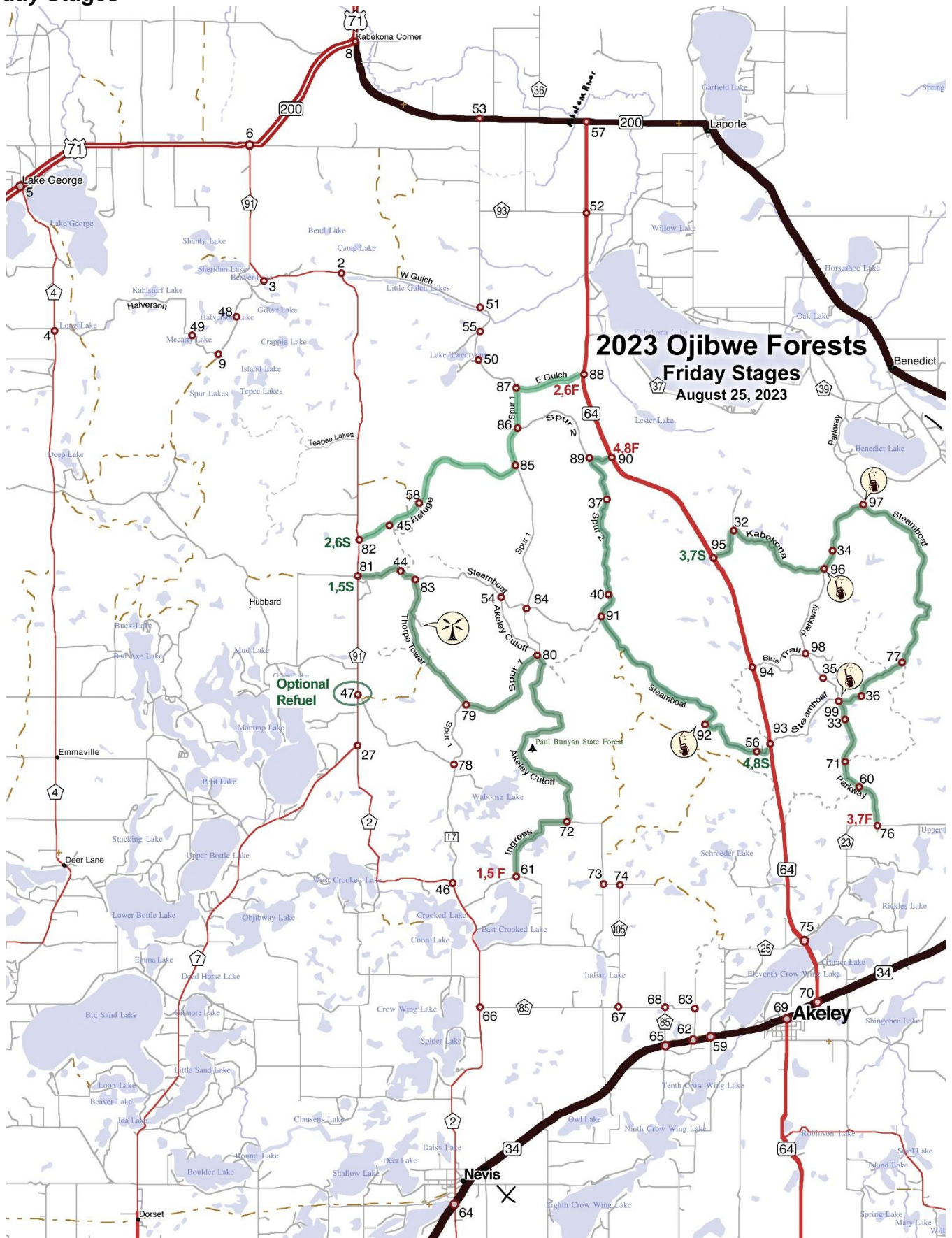
Section 4

Saturday Totals	38.26	67.54	105.80
------------------------	-------	-------	--------

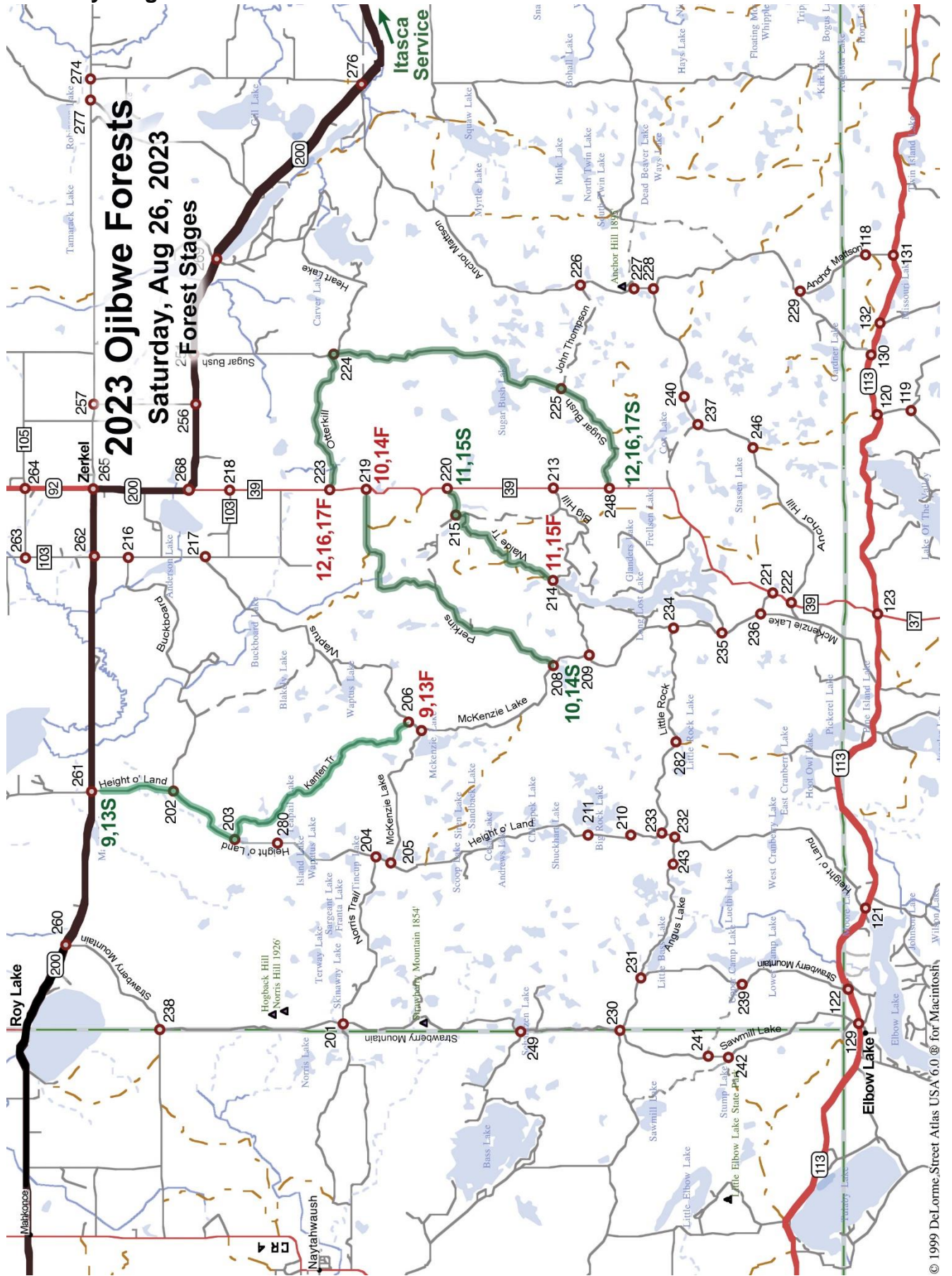
Appendix 3: Maps Area Map



Friday Stages



Saturday Stages



© 1999 DeLorme Street Atlas USA 6.0 for Macintosh

